

**Bicycle and Pedestrian Advisory Committee, Monthly Meeting****May 24, 2007, 5:30-7:30 p.m.****Oakland City Hall: *NOTE LOCATION: Hearing Room 3, First Floor*****AGENDA**

<b>Time</b>	<b>Item #</b>	<b>Topic</b>	<b>Topic Type *</b>
5:30	1	<b>Introductions, Appointment of Note Taker</b> (5 minutes)	Ad
5:35	2	<b>Approval of Meeting Minutes (consent item)</b> (5 minutes) Vote on motion to adopt minutes.	A
5:40	3	<b>West Grand Ave. detour</b> (20 minutes)— <i>Attachment</i> Status and background of the temporary bike lane removal and plans for reinstallation.	I
6:00	4	<b>Bike rack/parking meter update</b> (20 minutes) Status of parking meter removal and plans for new bike racks.	I
6:20	5	<b>West Street Bikeway, 52<sup>nd</sup> Street-West MacArthur Blvd., draft design plans review</b> (25 minutes) — <i>Attachment</i> Review draft design plans and discuss project overview/study.	I
6:45	6	<b>2008 resurfacing-bikeways overview/update</b> (20 minutes)— <i>Attachment</i> Review list of upcoming resurfacing projects on planned bikeway streets.	I
7:05	7	<b>Bike to Work Day report back</b> (10 minutes) Report on downtown Oakland energizer station and other Bike Month activities. Brief group brainstorm on improvements for next year.	I
7:15	8	<b>Upper Lakeshore fieldtrip proposal</b> (5 minutes) Vote on proposal to conduct a BPAC field trip to inspect the recently completed bike lanes on upper Lakeshore Ave.	A
7:20	9	<b>Announcements, suggestions for next meeting topics</b> (10 minutes)	Ad

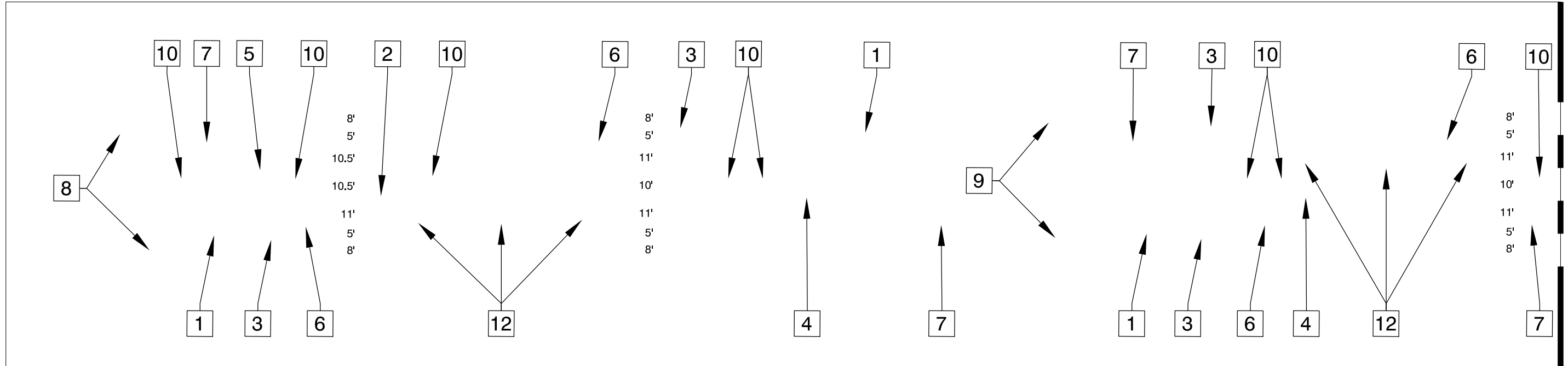
**\* Topic Types:**

I=informational; A=action item; Ad=administrative

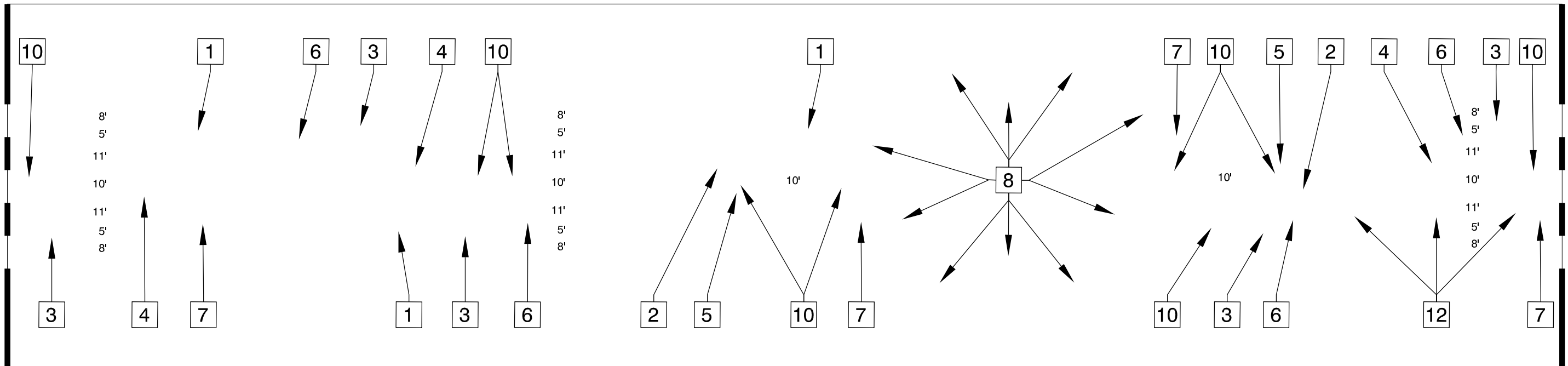
This meeting will follow Robert's Rules of Order (see <http://www.robertsrules.org/rulesintro.htm>)

## **Chronology of Bicycle Accommodations on the West Grand Ave Detour (2007)** (JWP, 16-May-07)

- *April 29 (Sunday):* A gasoline tanker fire destroys a portion of the MacArthur Maze, causing the closure of two ramps and a detour onto West Grand Ave.
- *May 3 (Thursday):* The Citizens Advisory Committee for the update to Oakland's Bicycle Master Plan provides feedback on bicycle access for the detour in response to the following modification. In order to accommodate detour traffic, a third travel lane will be installed on eastbound West Grand Ave from Market St to Martin Luther King, Jr Wy. The modification will require the temporary removal of a bicycle lane for approximately 0.3 miles. The bicycle lane will be reinstalled after the ramps are repaired and the detour is removed.
- *May 5 (Saturday):* The bicycle lane is removed to make room for the third travel lane on eastbound West Grand Ave from Market St to Martin Luther King, Jr Way. The width of the outside travel lane is maximized, allowing 15' for drivers and bicyclists to share this lane.
- *May 11 (Friday):* The City of Oakland's Bicycle and Pedestrian Program (Public Works Agency, Transportation Services Division) posts a bicyclist advisory on its web page, explaining the removal of the bicycle lane and identifying the compensatory measures that are being taken to facilitate bicycle access.
- *May 13 (Sunday):* Two sharrows are installed for each block between Market St and Brush St. The sharrows are placed at 11.5' on center from the face of curb. A parking lane line is also striped at 7' from the face of curb to encourage drivers to park as far to the right as possible. Two sharrows are installed for the block between San Pablo Ave and Martin Luther King, Jr Wy where parking is prohibited. In the block between Martin Luther King, Jr Wy and Northgate Ave, a delineator is removed to allow bicyclists access back into the bicycle lane. (When the third travel lane was added, a series of delineators were installed across the parking lane and bicycle lane to shift drivers over for the left turn from West Grand Ave onto Northgate Ave.)
- *May 15 (Tuesday):* Bicycle warning signs and "Share the Road" signs are installed on West Grand Ave at Market St and at West St. Two sharrows are added to the block between Brush St and San Pablo Ave. In total, ten sharrows are installed over the length of where the bicycle lane was removed.
- *May 24 (Thursday):* The bicycle accommodations for the West Grand Ave detour will be discussed as part of the monthly meeting for Oakland's Bicycle and Pedestrian Advisory Committee (Oakland City Hall, 5:30-7:30pm).



MATCH LINE A



MATCH LINE A

MATCH LINE B



**WEST ST BIKEWAY  
 STRIPING PLANS**  
 MAC ARTHUR BLVD TO 40TH ST

TRANSPORTATION SERVICES DIVISION  
 250 FRANK H. OGAWA PLAZA, SUITE 4344 \* OAKLAND CA, 94612  
 (510) 238-3466 \* FAX (510) 238-7415

TR2094 EXP. 9/30/08  
 CHECKED BY P. CHUN  
 DESIGNED BY J. SHAHAMIRI  
 DRAWN BY J. SHAHAMIRI

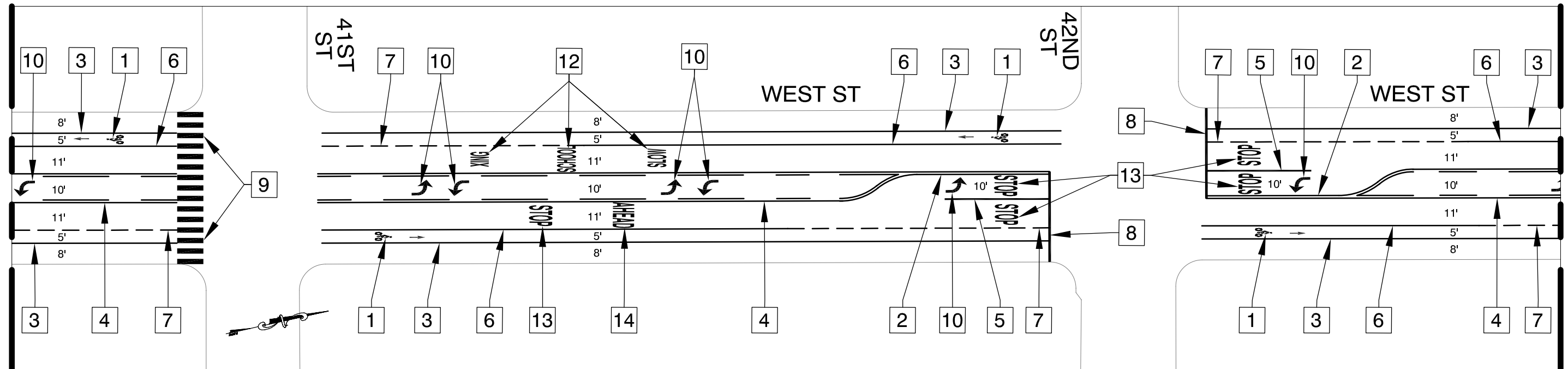
DATE	BY	REFERENCE

STRIPING PLAN  
 DRAFT

SCALE: 1"=40'
HOR.
VERT.
DATE: MAY 2007
SHEET NO.
4 OF 6

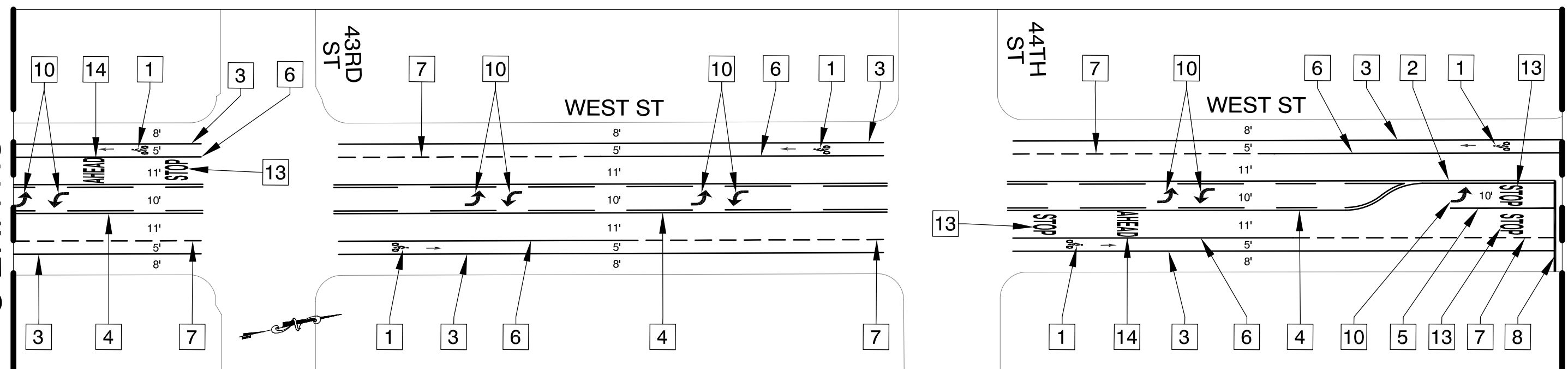
MATCH LINE B

MATCH LINE C



MATCH LINE C

MATCH LINE D



CONSTRUCTION NOTES:

- 1 INSTALL CALTRANS BIKE LANE SYMBOL WITH BIKE LANE ARROW  
20' AFTER CURB RETURN, SPACE SYMBOL AND ARROW 6' APART
- 2 INSTALL 4" DOUBLE YELLOW STRIPE (CALTRANS DETAIL 21)
- 3 INSTALL 4" SHOULDER STRIPE (CALTRANS DETAIL 27B)
- 4 INSTALL CENTER TURN LANE (CALTRANS DETAIL 31)
- 5 INSTALL 8" CHANNELING STRIPE (CALTRANS DETAIL 38A)
- 6 INSTALL 6" BIKE LANE STRIPE (CALTRANS DETAIL 39)
- 7 INSTALL 6" BIKE LANE SKIP STRIPE (CALTRANS DETAIL 39A)
- 8 INSTALL 12" WHITE STRIPE
- 9 INSTALL YELLOW CONTINENTAL CROSSWALK, 24" STRIPE,  
4' ON CENTER
- 10 INSTALL TYPE IV (L) ARROW
- 11 INSTALL TYPE IV (R) ARROW
- 12 INSTALL "SLOW SCHOOL XING" MARKING
- 13 INSTALL "STOP" MARKING
- 14 INSTALL "AHEAD" MARKING



**WEST ST BIKEWAY  
STRIPING PLANS**  
41ST ST TO 44TH ST

**CITY OF OAKLAND**  
TRANSPORTATION SERVICES DIVISION  
250 FRANK H. OGAWA PLAZA, SUITE 4344 \* OAKLAND CA, 94612  
(510) 238-3466 \* FAX (510) 238-7415  
PROJECT NO. \_\_\_\_\_



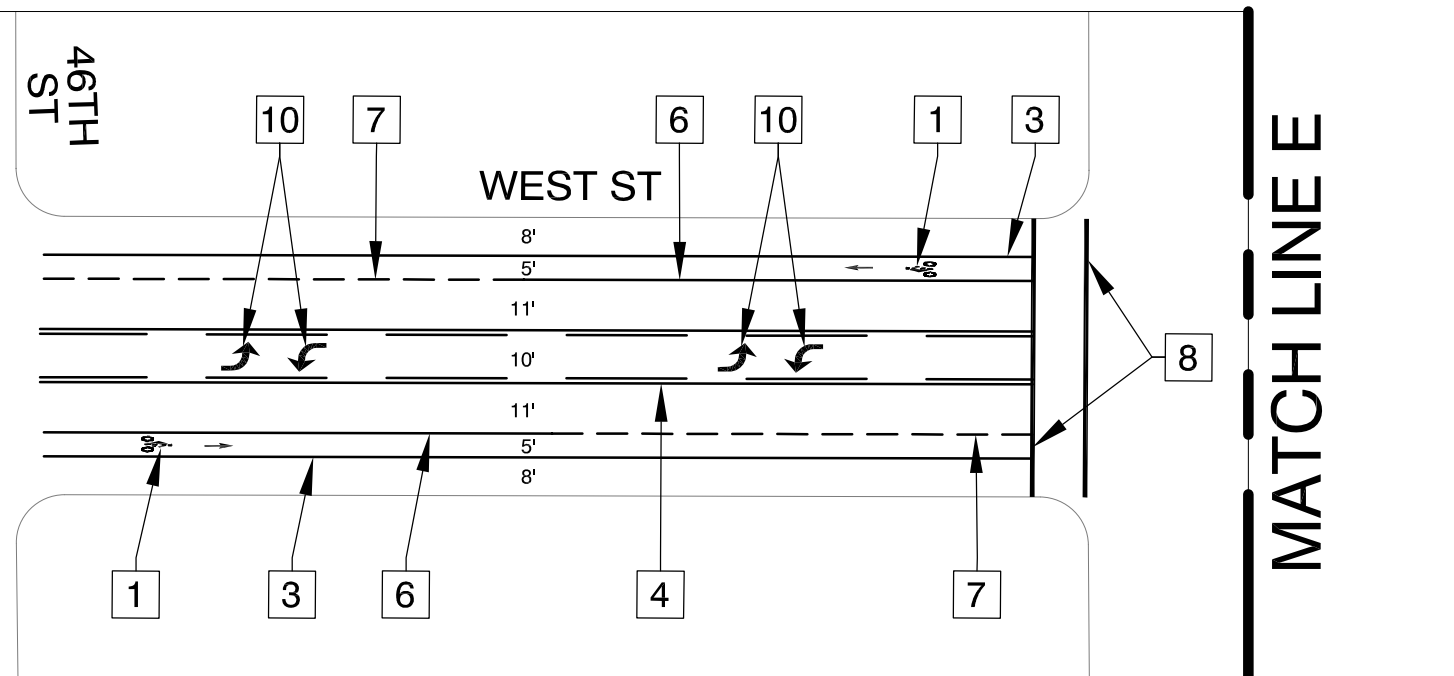
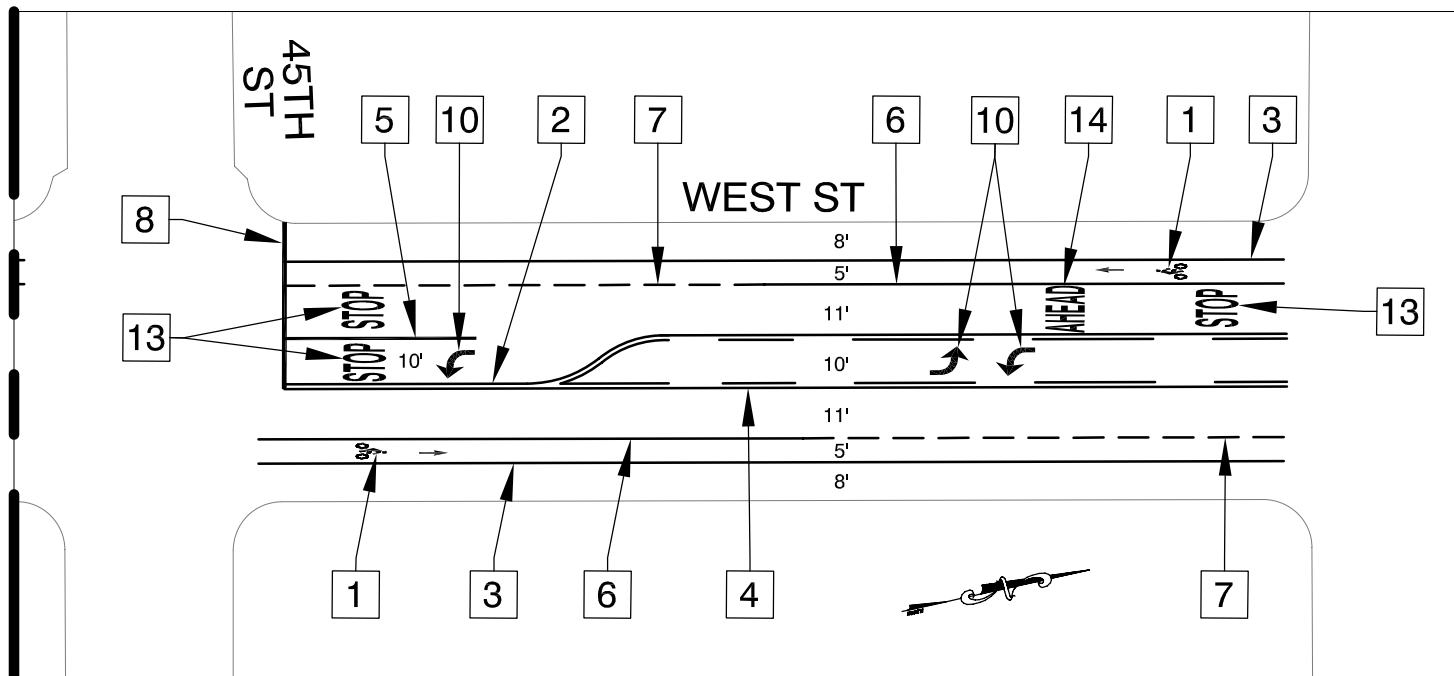
CIVIL ENGINEER	No.	DATE	BY	REFERENCE
RCE NO. TR2094 EXP. 9/30/08				
CHECKED BY P. CHUN				
DESIGNED BY J. SHAHAMIRI				
DRAWN BY J. SHAHAMIRI				

STRIPING PLAN  
DRAFT

SCALE: 1"=40'  
HOR.  
VERT.  
DATE: MAY 2007  
SHEET NO.  
5 OF 6

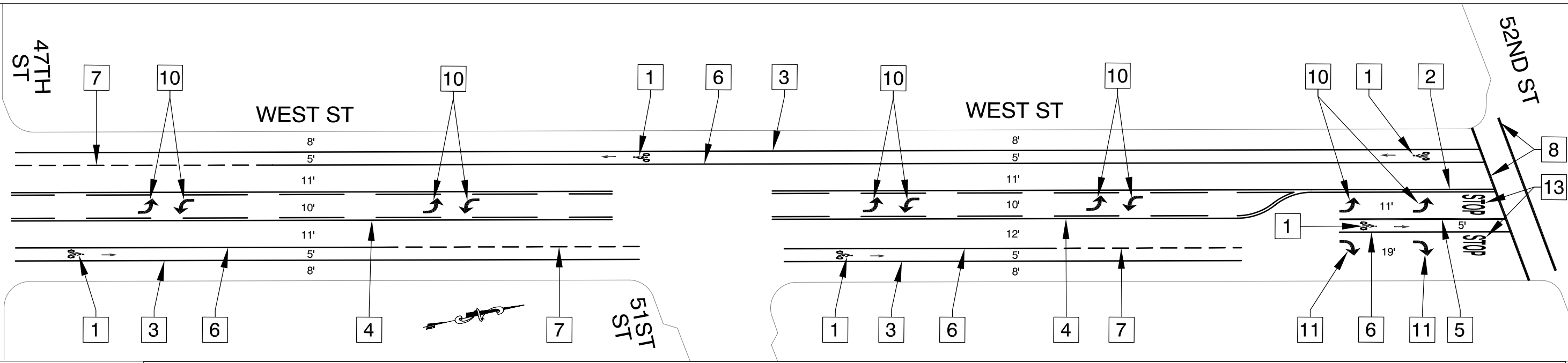
MATCH LINE D

MATCH LINE E



MATCH LINE E

52ND ST



CONSTRUCTION NOTES:

- 1 INSTALL CALTRANS BIKE LANE SYMBOL WITH BIKE LANE ARROW 20' AFTER CURB RETURN, SPACE SYMBOL AND ARROW 6' APART
- 2 INSTALL 4" DOUBLE YELLOW STRIPE (CALTRANS DETAIL 21)
- 3 INSTALL 4" SHOULDER STRIPE (CALTRANS DETAIL 27B)
- 4 INSTALL CENTER TURN LANE (CALTRANS DETAIL 31)
- 5 INSTALL 8" CHANNELING STRIPE (CALTRANS DETAIL 38A)
- 6 INSTALL 6" BIKE LANE STRIPE (CALTRANS DETAIL 39)
- 7 INSTALL 6" BIKE LANE SKIP STRIPE (CALTRANS DETAIL 39A)
- 8 INSTALL 12" WHITE STRIPE
- 9 INSTALL YELLOW CONTINENTAL CROSSWALK, 24" STRIPE, 4' ON CENTER
- 10 INSTALL TYPE IV (L) ARROW
- 11 INSTALL TYPE IV (R) ARROW
- 12 INSTALL "SLOW SCHOOL XING" MARKING
- 13 INSTALL "STOP" MARKING
- 14 INSTALL "AHEAD" MARKING



**WEST ST BIKEWAY STRIPING PLANS**  
45TH ST TO 52ND ST

**CITY OF OAKLAND**  
TRANSPORTATION SERVICES DIVISION  
250 FRANK H. OGAWA PLAZA, SUITE 4344 \* OAKLAND CA, 94612  
(510) 238-3466 \* FAX (510) 238-7415  
PROJECT NO. \_\_\_\_\_



CIVIL ENGINEER	No.	DATE	BY	REFERENCE
RCE NO. TR2094 EXP. 9/30/08				
CHECKED BY P. CHUN				
DESIGNED BY J. SHAHAMIRI				
DRAWN BY J. SHAHAMIRI				

STRIPING PLAN  
DRAFT

SCALE: 1"=40'  
HOR.  
VERT.  
DATE: MAY 2007  
SHEET NO.  
6 OF 6